



# Spare Parts and Accessories

DISAB Vacuum Units and Vacuum Systems



## Table of Contents

<b>About us</b>	<b>4</b>
<b>Cleaning Kit</b>	
Cleaning Kit Basic	7
Cleaning Kit Medium	8
Cleaning Kit Rubber Light	9
Cleaning Kit No Spark	10
Cleaning Kit Bulk	11
<b>Accessories</b>	<b>13</b>
Cleaning Hoses	12
Hose Sockets & Joint Pieces	16
Hose Transitions & Swivels	17
Suction Outlet Adaptors	18
Bends for Suction Pipes	19
Suction Pipes for Nozzles	20
Suction Pipes	22
Telescope Pipe For Nozzles	23
Nozzles For Telescope Pipes	24
Floor Nozzles	25
Front Nozzles	27
Flat Nozzles	29
Bulk, Heavy Cleaning Nozzles	30
Round Nozzles	31
Hand Nozzles	32
Hose Storage	33
DISAFLOW - System	36
KLO - Coupling	38
<b>Pipe System</b>	<b>39</b>
<b>Filters</b>	<b>47</b>
<b>Spare Parts</b>	<b>50</b>
<b>Service</b>	<b>54</b>

Place your order by contacting us at:  
+46 (0)8 514 505 70 or by email at [industrial@disab.com](mailto:industrial@disab.com)

For more information, please visit our website at  
[www.disab.com](http://www.disab.com)





## About us

### Providing dust-free industrial environments

Keeping dusts and spillages under control in any industrial site is a major task, especially when it comes to maintaining process quality and achieving high standards of health & safety and environmental performance.

We have a long experience with vacuum technology and a great expertise in engineering solutions for various industrial applications. Our equipment is used every day to clean plant sites, remove dust and hazardous particulates, recycle spillages, transport and recycle all sort of, and sometimes valuable, materials.

Our mission is to provide dust-free industrial environments. Our vision is to be the leader in our field.

### Innovation. Service. Quality.

Since 1976, DISAB has designed and manufactured market leading industrial equipment using vacuum-based technology, creating innovating and highly efficient solutions for all types of applications and industries throughout the world.

We provide our customers and business partners with innovative products and services. We ask questions and carry out research until we have the right solutions needed for every single job.

### Separating the useful from the harmful

At DISAB we value customer service and always deliver proper training for our customer on how to operate our machines and systems to ensure a safe working environment.

Doing so, we are pursuing a clearly defined goal: to maintain and extend our position as market leader in vacuum technology over the coming years. We believe in social responsibility and to separating the useful from the harmful. We shape the future by developing and providing outstanding solutions to achieve higher standards of health & safety in working environments.

## Learn from the past but grow into the future

Part of our growth and success have been to create long-term relationships, encouraging professional curiosity, and striving to make constant improvements.

Our expertise and experience when it comes to vacuum technology makes us the leader we are today. Every day we find new applications to where we can apply our knowledge and introducing vacuum technology to efficiently get the work done with a safe and cost effective solution!





# CLEANING KIT



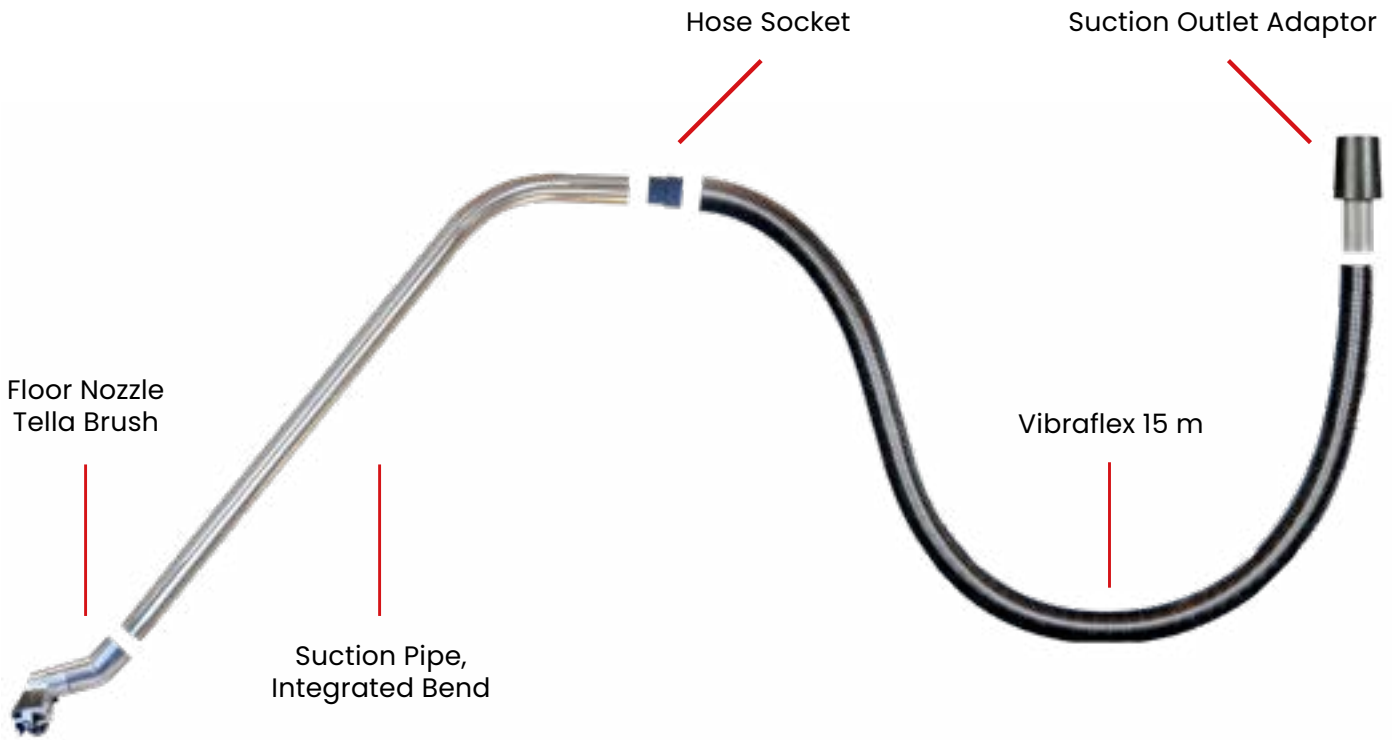
# CLEANING KIT

Discover how DISAB has provided a variety of industries, from pulp mills to the pharmaceutical industry, with reliable machines and equipment. Our reputation for offering the market's most comprehensive range of cleaning accessories is well founded. To make your choice even easier, we have created complete cleaning packages that include everything you need to immediately get started with your cleaning needs. With DISAB, efficiency and quality are always in focus.

## Cleaning Kit basic

Very flexible system for normal cleaning.  
Suitable for bakeries, pharmaceuticals and manufacturing.

Art. No.	Term
580-1001	Cleaning Kit Basic 38/76
580-1002	Cleaning Kit Basic 51/76
580-1003	Cleaning Kit Basic 60/76
580-1004	Cleaning Kit Basic 51/102
580-1005	Cleaning Kit Basic 60/102



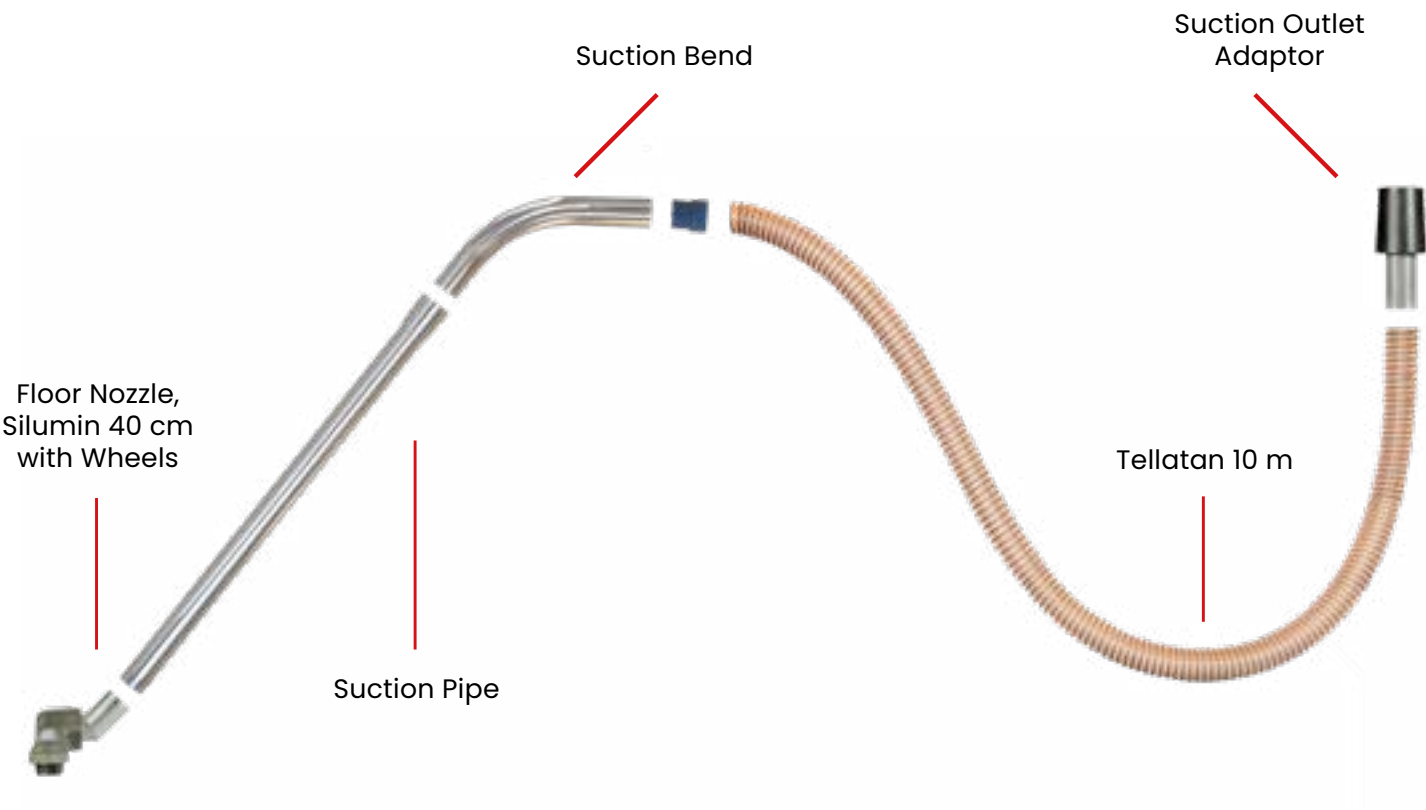
# CLEANING KIT

## Cleaning Kit Medium

A syste compromising between the wear resistance of rubber hoses and the flexibility of plastic hoses.

Suitable for lighter cleaning at power plants and paper and pulp industries.

Art. No.	Term
580-1006	Cleaning Kit Medium 51/76
580-1007	Cleaning Kit Medium 51/102

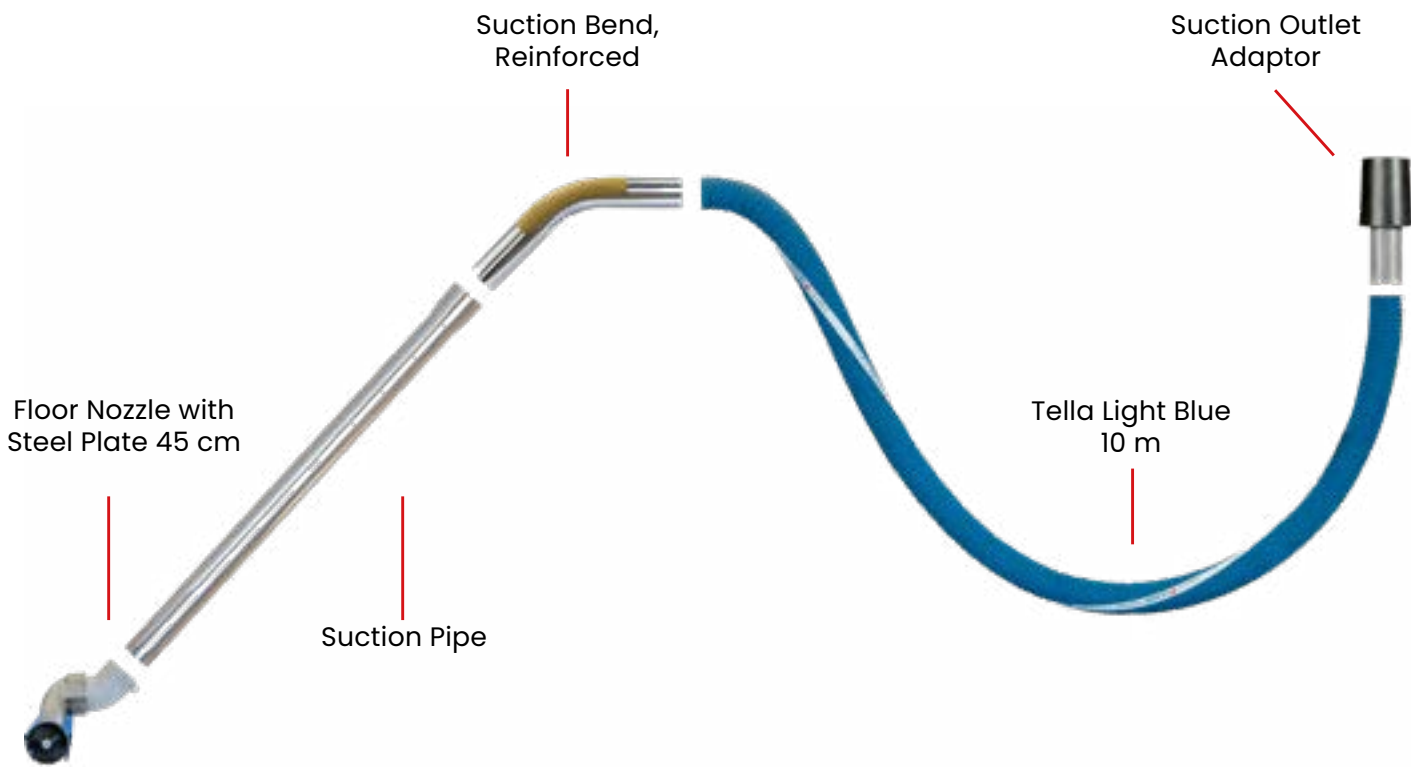


# CLEANING KIT

## Cleaning Kit Rubber Light

Suitable for heavy industry such as foundries, concrete and mines.

Art. No.	Term
580-1008	Cleaning Kit Rubber Light 51/76
580-1009	Cleaning Kit Rubber Light 51/102
580-1010	Cleaning Kit Rubber Light 60/76
580-1011	Cleaning Kit Rubber Light 60/102

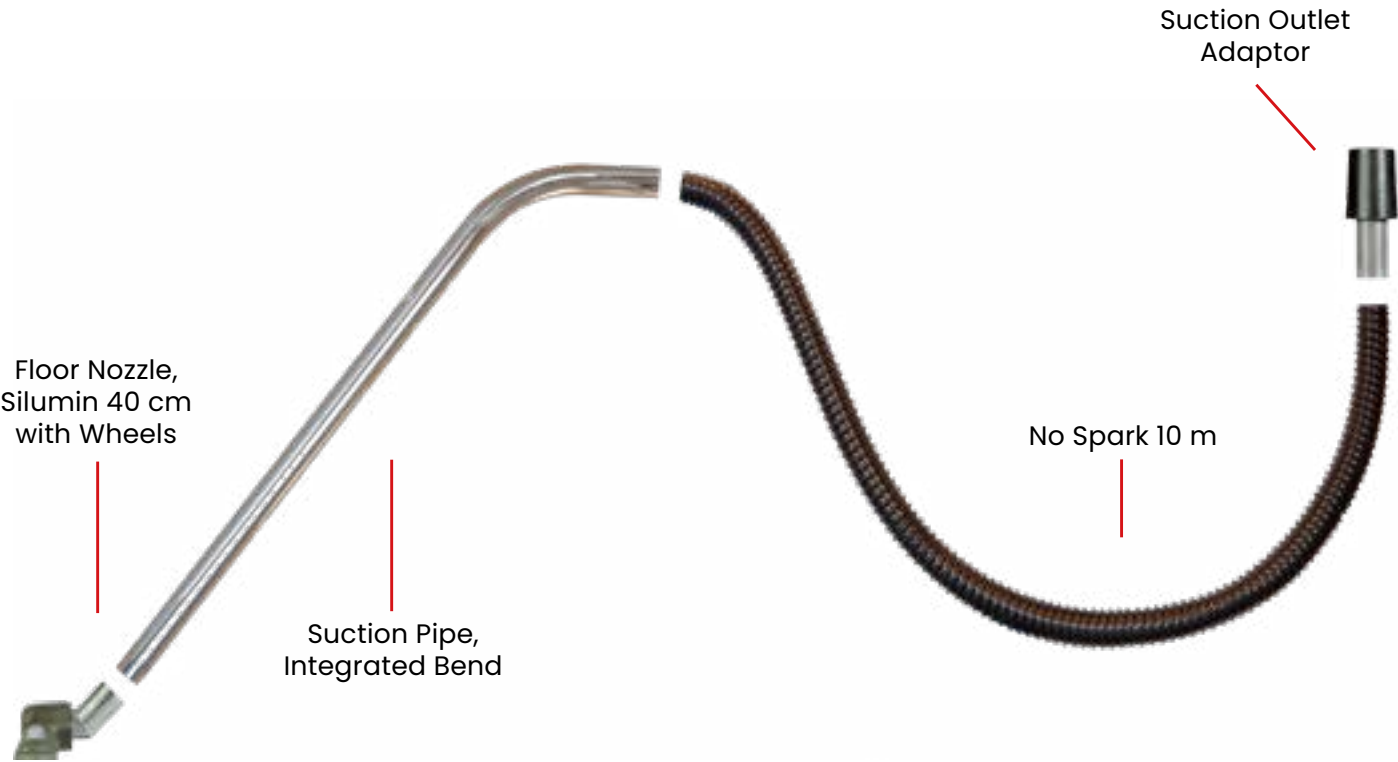


# CLEANING KIT

## Cleaning Kit No Spark

Package where avoidance of sparks is essential.

Art. No.	Term
580-1015	Cleaning Kit No Spark 51/76
580-1016	Cleaning Kit No Spark 51/102

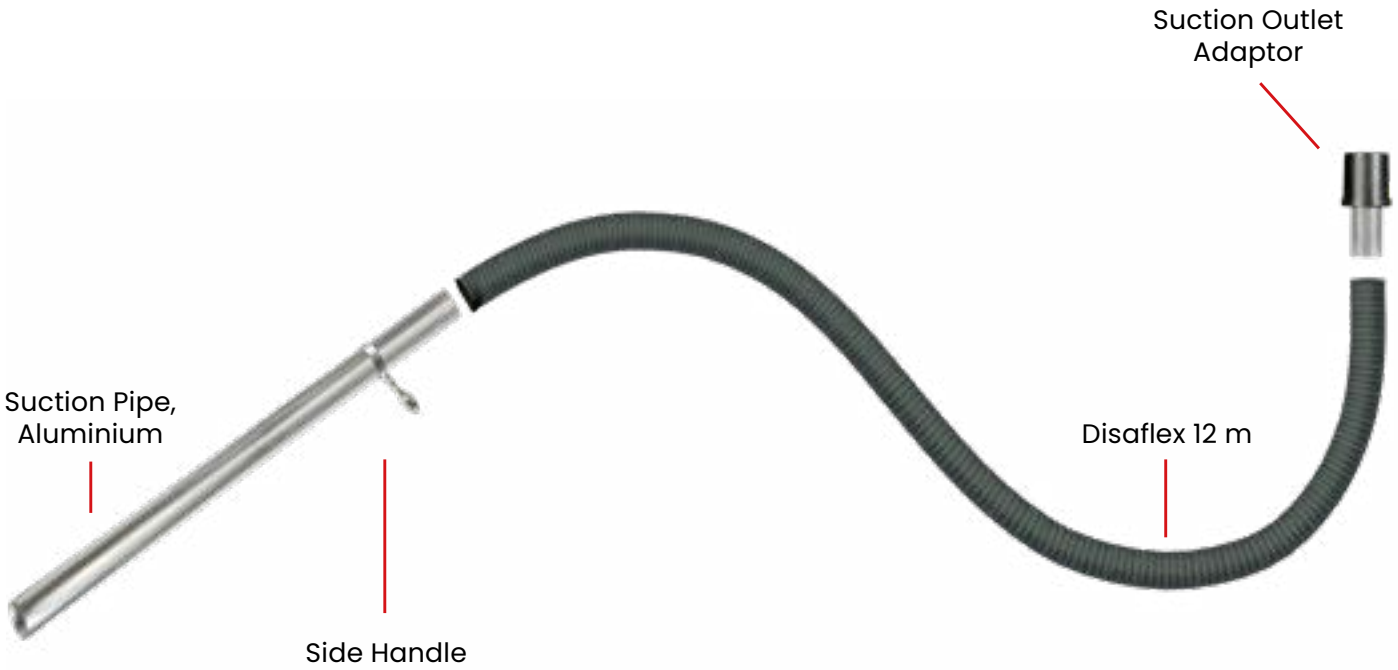


# CLEANING KIT

## Cleaning Kit Bulk

For disposal of large volumes, i.e. around conveyors and silos.

Art. No.	Term
580-1012	Cleaning Kit Bulk 76/76
580-1013	Cleaning Kit Bulk 76/102
580-1014	Cleaning Kit Bulk 102/102

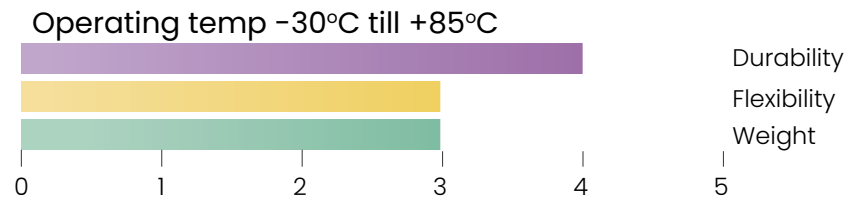


# CLEANING HOSES

## Tella Light Blue

Suitable for normal to abrasive materials such as wood chips, concrete and limestone.

Standard length: 10, 15 och 20 m. Can be grounded.



Tella Light Blue

Size	Art. No.	Weight
Ø 51 mm	RS 1-50/2SR	0,95 kg/m
Ø 60 mm	RS 1-60/2SR	1,11 kg/m
Ø 76 mm	RS 1-76/2SR	1,30 kg/m
Ø 102 mm	RS 1-102/2SR	1,85 kg/m

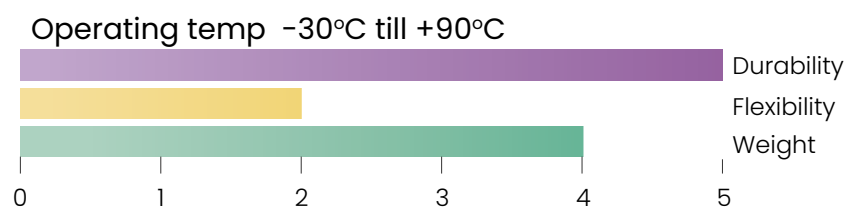
\* 5 = Strongest, most flexible, heaviest

## Disaflex

Black Para-rubber hose with special cord, steel helix and 3mm inner wear rubber. suitable for sludge, rocks, blaster sand etc.

Also as working hose for vacloaders.

Standard length 12 m. Can be grounded.



Disaflex

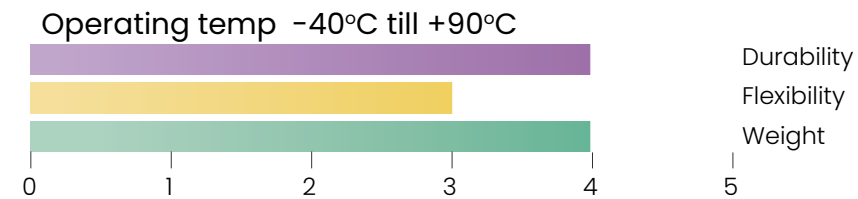
Size	Art. No.	Weight
Ø 76 mm	010 3076	2,0 kg/m
Ø 102 mm	010 3102	2,9 kg/m
Ø 127 mm	010 3127	3,9 kg/m
Ø 152 mm	010 3152	4,5 kg/m

\* 5 = Strongest, most flexible, heaviest

# CLEANING HOSES

## Vibratan

Vibratan is lighter than the rubber hoses and works well with abrasive materials but with somewhat lesser durability. Resistant to oil, gasoline, lye, and solvents. Standard length 10 m. Can be grounded.



Vibratan

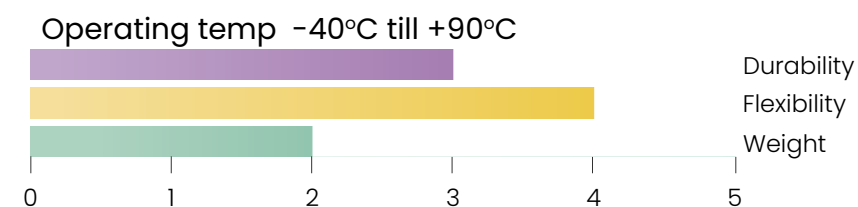
Size	Art. No.	Weight
Ø 38 mm	007 0038	0,46 kg/m
Ø 51 mm	007 0051	0,71 kg/m
Ø 60 mm	007 0060	0,84 kg/m
Ø 76 mm	007 0076	1,06 kg/m
Ø 102 mm	007 0102	1,48 kg/m

\* 5 = Strongest, most flexible, heaviest

## Tellatan

Very smooth and flexible hose suited for most common cleaning chores. Frequently used in bakeries and general cleaning at power and process plants.

Standard length 10 m. Can be grounded.



Tellatan

Size	Art. No.	Weight
Ø 38 mm	RS 1-38/PREAF	0,39 kg/m
Ø 51 mm	RS 1-50/PREAF	0,45 kg/m
Ø 60 mm	RS 1-60/PREAF	0,50 kg/m
Ø 76 mm	RS 1-76/PREAF	0,61 kg/m

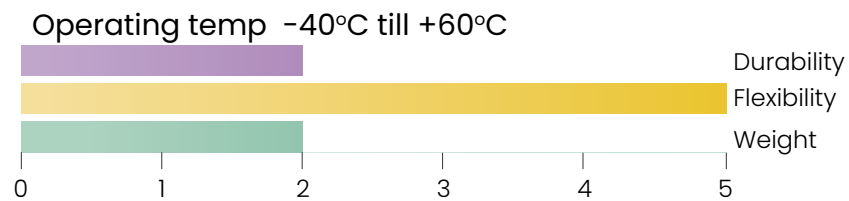
\* 5 = Strongest, most flexible, heaviest



# CLEANING HOSES

## Vibraflex

Very smooth and flexible hose suited for most cleaning tasks. Frequently used in bakeries, power plants and other process facilities for general cleaning purposes. Standard length 15 m. Antistatic.



Size	Art. No.	Weight
Ø 38 mm	006 0038	0,29 kg/m
Ø 51 mm	006 0051	0,42 kg/m
Ø 60 mm	006 0060	0,54 kg/m

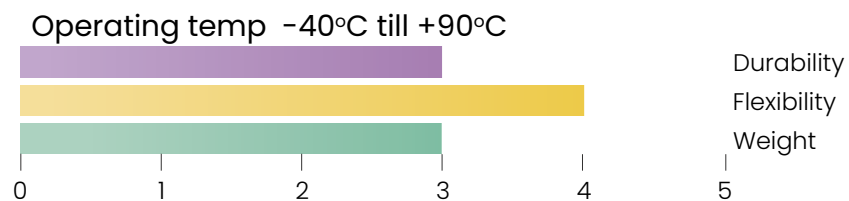
\* 5 = Strongest, most flexible, heaviest



Vibraflex

## No Spark Cleaning Hose

Avoid risks and maximize efficiency with this reliable cleaning hose, perfectly suited for situations where sparking must be avoided. Standard length 10 m.



Size	Art. No.	Weight
Ø 51 mm	010 0013	0,71 kg/m

\* 5 = Strongest, most flexible, heaviest



No Spark Cleaning Hose

# GROUNDING INSTRUCTIONS

## Procedure for contacting earth coil in vacuum cleaner hose.



Leave approx. 60mm of the metal spiral.

Bend the exposed spiral in the hose and put on the hose clamp.

Slide the accessory in and tighten the hose clamp.





# HOSE SOCKETS & JOINT PIECES

## Hose Socket

Hose socket in plastic with aluminium socket, for inside assembly on hose. Suitable for all 38 mm hoses.

Size	Art. No.
Ø 38 mm	RS 30-38/J



Hose Socket

## Hose Socket Vibraflex

Hose sockets suitable for Vibraflex-hose.

Size	Art. No.
Ø 38 mm	054 0038
Ø 51 mm	054 0051
Ø 60 mm	054 0060



Hose Socket Vibraflex

## Hose Socket Vibratan

Hose sockets in polyurethane suitable for all TELLA working hoses in polyurethane.

Size	Art. No.
Ø 38 mm	053 0038
Ø 51 mm	053 0051
Ø 60 mm	053 0060
Ø 76 mm	053 0076
Ø 102 mm	053 0102



Hose Socket Vibratan

## Joint Piece for Hose

Joint piece for hose in steel.

Size	Art. No.
Ø 38 mm	445100
Ø 51 mm	445150
Ø 60 mm	445200
Ø 76 mm	445250
Ø 102 mm	445300
Ø 127 mm	445350
Ø 152 mm	445400



Joint Piece, steel

# HOSE TRANSITIONS & SWIVELS

## Hose Transition

Hose transition for hose in steel.

Size	Art. No.
Ø 38/51 mm	RS 38-50



Hoose transition, steel

## Hose Transition

Hose transitions for hose in steel.

Size	Art. No.
Ø 51/60 mm	450100
Ø 51/76 mm	450150
Ø 60/76 mm	450200
Ø 76/102 mm	450250
Ø 102/127 mm	450300
Ø 102/152 mm	450350
Ø 127/152 mm	450450



Hose transition, steel

## Swiveling Coupling

Swiveling coupling in steel.

Size	Art. No.
Ø 38 mm	RS 32-38/M
Ø 51 mm	RS 32-50/M
Ø 60 mm	RS 32-60/M
Ø 76 mm	RS 32-76/M



Swiveling Coupling, steel

## Swiveling Coupling, Nylon

Not groundable.

Size	Art. No.
Ø 38 mm	RS 32-38/N
Ø 51 mm	RS 32-50/N
Ø 60 mm	RS 32-60/N



Swiveling Coupling, nylon

# SUCTION OUTLET ADAPTORS

## Suction Outlet Adaptor Special

Suction outlet adapter special in antistatic rubber.  
Fits outlets 68 mm to 78 mm.

Size	Art. No.
Ø 51 mm	RS 33-50/VS Special



Suction Outlet  
Adaptor Special

## Suction Outlet Adaptor for Tella Blue 108mm outlets.

Antistatic.

Size	Art. No.
Ø 51 mm	071 0051
Ø 60 mm	071 0060
Ø 70 mm	071 0076
Ø 108 mm	071 0102



Suction Outlet Adaptor for  
Outlets 108mm

## Suction Outlet Adaptor for Tella Blue 76mm

Antistatic.

Size	Art. No.
Ø 38 mm	070 0038
Ø 51 mm	070 0051
Ø 60 mm	070 0060
Ø 76 mm	070 0076



Suction Outlet Adaptor for  
Outlets 76mm

## Suction Outlet Adaptor steel

For Tella suction outlets  
76-38, 81-38,1,2,3.

Size	Art. No.
Ø 38 mm	RS 34-38



Suction Outlet Adaptor, steel

# BENDS FOR SUCTION PIPES

## Steel Bend, Standard

Double-coned, standard

Size	Art. No.
Ø 38 mm	RS 31-40
Ø 51 mm	RS 31-50
Ø 60 mm	RS 31-60



Steel Bend, standard

## Steel Bend, strengthened

Double-coned, strengthened.

Size	Art. No.
Ø 38 mm	RS 31-40/F
Ø 51 mm	RS 31-50/F
Ø 60 mm	RS 31-60/F



Steel Bend, strengthened





# SUCTION PIPES FOR NOZZLES

## Side Handle Steel

Size	Art. No.
Ø 51 mm	020 5000
Ø 60 mm	020 6000
Ø 76 mm	020 7600
Ø 102 mm	020 1020



Side Handle, steel

## Handle for mounting suction pipe aluminium

Size	Art. No.
Ø 76 mm	435-572
Ø 102 mm	435-574
Ø 152 mm	435-576



Handle, aluminium

## Suction Pipe with Integrated Bend

Suction pipe in steel with integrated bend.

Size	Art. No.
Ø 38 mm	021 MA38
Ø 51 mm	021 MA51



Suction Pipe,  
Integrated Bend

## Suction Pipe with reinforced suction bend.

Suction pipe in aluminium with rubber covering and handle.

Size	Art. No.
Ø 51 mm	022 0051
Ø 60 mm	022 0060



Suction Pipe,  
Reinforced Bend

# SUCTION PIPES FOR NOZZLES

## Suction Pipe Aluminium 1,5 m

Suction pipe in aluminium..

Coned in respectively out. Length 1.5 m

Size	Art. No.
Ø 51 mm	RS 2-50/3



Suction Pipe, aluminium

## Suction Pipe Steel 1 m

Suction pipe in steel.

Coned in respectively out. Length 1 m

Size	Art. No.
Ø 51 mm	RS 2-50/4S
Ø 60 mm	RS 2-60/4S



Suction Pipe, steel

## Suction Pipe Aluminium 1 m

Suction pipe in aluminium.

Coned in respectively out. Length 1 m

Size	Art. No.
Ø 51 mm	RS 2-50/1
Ø 60 mm	RS 2-60/1



Suction Pipe, aluminium

## Suction Pipe Aluminium 1,2 m

Suction pipe in aluminium..

Coned in respectively out. Length 1,2 m

Size	Art. No.
Ø 51 mm	RS 2-50/2



Suction Pipe, aluminium

# SUCTION PIPES

## Suction Pipe, Aluminium 1,2 m

Straight suction pipe in aluminium, front angle. length 1,2 m.  
Round/side handle for mounting on suction pipe see page 20.

Size	Art. No.
Ø 76 mm	020 0076
Ø 102 mm	020 0102
Ø 127 mm	020 0127
Ø 152 mm	020 0152



Suction Pipe, aluminium

## Suction Pipe, Aluminium 0,5 m

Straight suction pipe in aluminium, front angle. length 0,5 m.  
Round/side handle for mounting on suction pipe see page 20.

Size	Art. No.
Ø 38 mm	420140
Ø 51 mm	420200
Ø 60 mm	420250
Ø 78 mm	420300
Ø 102 mm	420350



Suction Pipe, aluminium

## Suction Pipe, Steel 0,5 m

Straight suction pipe in steel, front angle. length 0,5 m.  
Round/side handle for mounting on suction pipe see page 20.

Size	Art. No.
Ø 51 mm	410150
Ø 60 mm	410200
Ø 76 mm	410250
Ø 102 mm	410350
Ø 127 mm	410400
Ø 152 mm	410450



Suction Pipe, steel

# TELESCOPE PIPE FOR NOZZLE

## Telescope Pipe Ø 51 mm

Adjustable telescope pipe in aluminium.  
Length 1,2 to 2,3 m respectively 2,5 to 4,8 m.

Size	Art. No.
Ø 51 mm	RS 2-50/6A
Ø 51 mm	RS 2-50/6B

See next page for compatible nozzles.



Telescope Pipe Ø 51 mm

## Telescope pipe Ø 38 mm

Adjustable telescope pipe in aluminium.  
Length 1,2 to 2,3 m respectively 2,5 to 4,8 m.

Size	Art. No.
Ø 38 mm	RS 2-38/6A
Ø 38 mm	RS 2-38/6B

See next page for compatible nozzles.



Telescope Pipe Ø 38 mm





# NOZZLES FOR TELESCOPE PIPES

## Nozzle for Telescope Pipe

Nozzle for telescope pipe, in plastic.  
Radius 200 mm Ø 38 mm och Ø 51 mm.

Art. No.
RS 13-50/L



## Nozzle for Telescope Pipe

Nozzle for telescope pipe, in plastic.  
Radius 100 mm Ø 38 mm och Ø 51 mm.

Art. No.
RS 13-50/S



## Nozzle for Telescope Pipe Cable Rack

Nozzle for Telescope pipe, suitable for cable racks and flat surfaces. Suitable for Ø 38 mm och Ø 51 mm.

Size	Art. No.
Ø 38 mm	RS 13-50/P
Ø 51 mm	RS 13-50/P



## Revolving Nozzle for Telescope Pipe

Nozzle for telescopic pipe, steel plate with revolving top mould. Width 30, 40 and 60cm. Only fits Ø 38 mm och Ø 51

Size	Art. No.
Ø 38 - 51 mm	RS 20-40/30T
Ø 38 - 51 mm	RS 20-40/40T
Ø 38 - 51 mm	RS 20-40/60T



Revolving Nozzle for Telescope Pipe

# FLOOR NOZZLES

## Floor Nozzle, Steel Plate

Floor Nozzle, steel plate. Exchangeable link, rubber stripes and wheels. Width 55 cm.

Size	Art. No.
Ø 51 mm	RS 5-50/2E
Ø 60 mm	RS 5-60/2E



Floor Nozzle, Steel Plate 55 cm

## Floor Nozzle, Steel Plate

Floor Nozzle, steel plate. Exchangeable link, rubber stripes and wheels. Width 45 cm.

Size	Art. No.
Ø 51 mm	RS 5-50/2D
Ø 60 mm	RS 5-60/2D



Floor Nozzle, Steel Plate 45 cm

## Floor Nozzle, Steel Plate

Floor Nozzle, steel plate. Exchangeable link, rubber stripes and wheels. Width 30 cm

Size	Art. No.
Ø 51 mm	RS 5-50/2CM
Ø 60 mm	RS 5-60/2CM



Floor Nozzle, Steel Plate 30 cm

## Floor Nozzle, Silumin with Wheels

Floor nozzle, in silumin with link. Exchangeable brush stripes and wheels. Width 60cm.

Size	Art. No.
Ø 51 mm	RS 4-50/60H



Floor Nozzle, Silumin with Wheels, 60 cm

## Floor Nozzle, Silumin with Wheels

Floor nozzle, in silumin with link. Exchangeable brush stripes and wheels. Width 40cm.

Size	Art. No.
Ø 51 mm	RS 4-50/40H



Floor Nozzle, Silumin with Wheels, 40 cm

# FLOOR NOZZLES

## Floor Nozzle silumin

Floor nozzle, in silumin with link.  
Exchangeable brush stripes. Width 40 cm.

Size	Art. No.
Ø 51 mm	RS 4-50/40



Floor nozzle silumin  
width 40 cm

## Floor Nozzle silumin/rubber

Floor nozzle, in silumin with link.  
Exchangeable rubber and brush stripes with  
extra brushes. Width 40 cm.

Size	Art. No.
Ø 51 mm	RS 4-50/40G



Floor nozzle silumin/rub-  
ber width 40 cm.

## Floor Nozzle Tella Brush

Floor nozzle Tella brush, in aluminium and  
plastic with link. Adjustable wheels.  
Exchangeable brush stripes. Width 50 cm.

Size	Art. No.	Width
Ø 38 mm	025 0038	370 mm
Ø 51 mm	025 0051	500 mm
Ø 60 mm	025 0060	



Floor nozzle Tella brush  
width 50 cm

## Floor Nozzle Tella Rubber

Floor nozzle Tella brush, in aluminium and plastic  
with link. Adjustable wheels.  
Exchangeable rubber stripes. Width 50 cm.

Size	Art. No.
Ø 38 mm	026 0038
Ø 51 mm	026 0051
Ø 60 mm	026 0060



Floor nozzle Tella  
Rubber 50 cm

# FRONT NOZZLES

## Front Nozzle plastic

Front nozzle in plastic. Length 45 cm.  
Width 4,5 cm. Suction port 2,5 cm.

Size	Art. No.
Ø 38 mm	RS 27-38
Ø 51 mm	RS 27-50



Front floor nozzle plastic

## Front Nozzle plastic

Front nozzle in plastic. Length 45 cm.  
Width 6 cm. Suction port 1,5 cm.

Size	Art. No.
Ø 38 mm	RS 27-38/LP
Ø 51 mm	RS-27-50/LP
Ø 60 mm	RS 27-60/LP



Front floor nozzle plastic

## Front Nozzle plastic flat

Front nozzle in plastic. Length 38 cm.  
Width 4 cm. Suction port 0,5 cm.

Size	Art. No.
Ø 38 mm	RS 24-38



Front floor nozzle plastic  
flat

## Front Nozzle plastic

Front nozzle in plastic, conical.  
Length 26 cm. Suction port 2,8 cm.

Size	Art. No.
Ø 38 mm	RS 23-38



Front floor nozzle  
plastic

## Front Nozzle rubber

Front nozzle in rubber, conical.  
Length 50 cm. Suction port 1,8 cm.

Size	Art. No.
Ø 51 mm	RS 13-50/B

\*Wont fit direct on hose use transition  
RS 85-50 between hose and nozzle.



Front floor nozzle  
rubber



# FRONT NOZZLES

## Front Nozzle, Rubber

Front nozzle in rubber.  
Length 50 cm. Suction port 3 cm.

Size	Art. No.
Ø 51 mm	RS 11-50

*\*Wont fit direct on hose, use transition RS 85-50 between hose and nozzle.*



Front Nozzle, Rubber

## Front Nozzle, Rubber

Front nozzle in rubber with collar, conical.  
Length 25 cm. Suction port 2 cm.

Size	Art. No.
Ø 51 mm	031 0500

*\*Wont fit direct on hose use transition RS 85-50 between hose and nozzle.*



Front Nozzle,  
Rubber Conical

## Front Nozzle, Steel.

Front nozzle in steel. Length 70 cm.  
Width 5 cm. Suction port 1,2 cm.

Size	Art. No.
Ø 38 mm	RS 27-38/LMA
Ø 51 mm	RS 27-50/LMA



Front Nozzle, steel

## Front Nozzle, Steel

Front nozzle in steel. Length 75 cm.  
Width 7 cm. Suction port 2 cm.

Size	Art. No.
Ø 51 mm	RS 27-50/LMB
Ø 60 mm	RS 27-60/LMB



Front Nozzle, steel

## Front Nozzle, Aluminium

Front nozzle in aluminium. Length 68 cm.  
Width 5 cm. Suction port 1,4 cm.

Size	Art. No.
Ø 38 mm	RS 27-38/LMAL



Front Nozzle,  
aluminium

# FLAT NOZZLES

## Flat Nozzle, Siliumin

Flat nozzle in silumin with fixed link.  
Width 15 cm.

Size	Art. No.
Ø 38 mm	RS 3-38
Ø 51 mm	RS 3-50
Ø 60 mm	RS 40-60 SKR



Flat Nozzle, Silumin

## Flat Nozzle Siliumin with Wheels

Flat nozzle in silumin with fixed link, wheels.  
Without brush stripes width 15 cm.

Size	Art. No.
Ø 38 mm	RS 3-38/7
Ø 51 mm	RS 3-50/7



Flat Nozzle, Silumin  
with Wheels

## Flat Nozzle, Silumin Brush

Flat nozzle in siluin with brush stripes.  
Width 15 cm.

Size	Art. No.
Ø 38 mm	RS 3-38/2
Ø 51 mm	RS 3-50/2



Flat Nozzle,  
Silumin Brush

## Flat Nozzle, Rubber

Flat nozzle with serrated rubber list.  
Width 20 cm.

Size	Art. No.
Ø 38 mm	RS 3-38/5
Ø 51 mm	RS 3-50/5



Flat Nozzle,  
Rubber

# BULK, HEAVY CLEANING NOZZLES



### Nozzle for bulk suction

Size	Art. No.
Ø 51 mm	023 0051
Ø 60 mm	023 0060
Ø 76 mm	023 0076
Ø 102 mm	023 0102
Ø 127 mm	023 0127
Ø 152 mm	023 0152



Bulk nozzle

### Floor Nozzle, heavy design

Size	Art. No.
Ø 76 mm	026 0076
Ø 102 mm	026 0102



Floor nozzle heavy design

# ROUND NOZZLES

### Round Brush

Round brush in rubber with hard brush in nylon.  
Width 9,5 cm.

Size	Art. No.
Ø 38 mm	RS 8-38/A
Ø 51 mm	RS 8-50/A
Ø 60 mm	RS 8-60/A



Round Brush

### Round Brush Medium

Round brush in rubber with medium soft brush.  
width 7,5 cm.

Size	Art. No.
Ø 38 mm	RS 8-38/B
Ø 51 mm	030 0500



Round Brush Medium

### Round Brush hard

Round brush in rubber with brush in metal.  
Width 9,5 cm.

Size	Art. No.
Ø 38 mm	RS 8-38/AM
Ø 51 mm	RS 8-50/AM
Ø 60 mm	RS 8-60/AM



Round Brush Hard

### Brush for 030 0500

Bottom mould to round brush 030 0500.  
medium soft brush in nylon. Also fits 8-38/B.

Art. No.
RS 8-50/BU



RS 8-50/BU

### Brush for RS 8-50/A

Bottom mould to round brush 8-50/A.  
Hard brush in nylon. Also fits 8-38/A and 8-60/A.

Art. No.
RS 8-50/AU



Brush for RS 8-50/A

### Brush for RS 8-50/AM

Bottom mould to round brush 8-50/AM.  
Hard brush in metal. Also fits 8-38/AM and 8-60/AM.

Art. No.
RS 8-50/AMU



Brush for RS 8-50/AM



# HAND NOZZLES

## Oval Brush

Size	Art. No.
Ø 38 mm	RS 52-38



Oval Brush

## Rectangle Brush

Width 7 cm.

Size	Art. No.
Ø 38 mm	RS 25-38/A



Rectangle Brush



# HOSE STORAGE



## Keep it tidy

- Better efficiency
- Reduce downtime
- Creates a better working enviroment

Optimize your production capacity with our efficient cleaning solutions and clearly marked cleaning stations. Through systematic maintenance, we reduce the risk of critical errors and downtime, while our strategy goes beyond mere cleaning to significantly increase efficiency with reduced setup times and optimal machine maintenance.

Be sure not only to create a safe and pleasant workplace, but also invest in a long-term cost reduction by contacting us for the first step towards a more profitable and successful business.



# HOSE STORAGE

## Hose Cart

Price on request with hose of choice.

Contact us for more information.



Hose Cart

## Hose Reel-Up Device

Swiveling bracket 90°, antistatic hose, microswitch that switches off the suction source when the hose is coiled up

Size	Art. No.
Ø 38 – 10 m	RS 4000/AP
Ø 50 – 10 m	RS 5000/AP

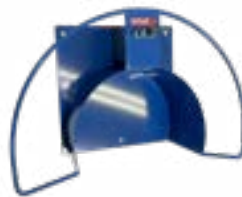


Hose Reel-up

## Hose Shelf with tool holder

Width 590 mm. Depth 125 – 250mm. Height 350 mm.

Size	Art. No.
Ø 38 – 60 mm	RS 70-50/HM
Ø 76 – 102 mm	RS 70-50/HS



Hose Shelf

## Hose Holder with Hook

Hose holder for hoses up to 60 mm, with hook.

Size	Art. No.
Ø 38 – 60 mm	075 0076



Hose Holder with Hook

## Tool Basket

Top edge measures 155 x 330 mm. Height 300mm.

Size	Art. No.
155 x 330 mm	074 0051



Tool Basket

# HOSE STORAGE

## Tool Holder, Electro-Galvanized

Size	Art. No.
180 mm	RS 16B



Tool holder 180 mm

## Tool Holder, Electro-Galvanized

Size	Art. No.
80 mm	RS 16A



Tool Holder 80 mm

## Tool Holder

Max 10 kg. Max diameter pipe 38 mm.

Art. No.
080 0013



Tool Holder

## Wall Panel

Mounting not included.

Size	Art. No.
1500 x 400 mm	080 0011



Wall Panel



# DISAFLOW – SYSTEM

## DFS Hose Coupling with Flange

Size	Art. No.
Ø 76 mm	435-422
Ø 100 mm	435-424
Ø 125 mm	435-425
Ø 150 mm	435-426
Ø 200 mm	435-428



DFS Hose Coupling

## DFK Spanner

Size	Art. No.
Ø 100 mm	435-524
Ø 150 MM	435-526
Ø 200 MM	435-528



DFK Spanner

## DFV Steel Coupling for Welding, Long

Size	Art. No.
Ø 150 mm	435-449
Ø 200 mm	435-450



DFV Steel Coupling for Welding, Long



# DISAFLOW – SYSTEM

## DFV Steel Coupling for Welding, Short

Size	Art. No.
Ø 100 mm	435-444
Ø 150 mm	435-446
Ø 200 mm	435-448



Steel Coupling for Welding, Short

## DSB Steel Bend, 90°

Size	Art. No.
Ø 150 mm	435-632
Ø 200 mm	435-631



DSB Steel Bend 90°

## DFU Reducer

Size	Art. No.
Ø 100/76 mm	435-704
Ø 125/100 mm	435-703
Ø 150/100 mm	435-702
Ø 150/125 mm	435-701
Ø 200/150 mm	435-700



DFU Reducer

## DFB Blind Cap

Size	Art. No.
Ø 100 mm	435-514
Ø 150 mm	435-516
Ø 200 mm	435-518



DFB Blind Cap

## DFY Y-Pipe

Size	Art. No.
Ø 150-2x100	435-709
Ø 150-2x150	435-708
Ø 200-2x150	435-706



DFY Y-Pipe

# KLO – COUPLINGS

## Hose Coupling, Female

Size	Art. No.
Ø 76 mm	081 0076
Ø 102 mm	081 0102
Ø 127 mm	081 0127
Ø 152 mm	081 0152



Hose Coupling, Female

## Coupling for welding, Male

Size	Art. No.
Ø 76 mm	082 0076
Ø 102 mm	082 0102
Ø 127 mm	082 0127
Ø 152 mm	082 0152



Coupling Welding, Male

## Hose Coupling, Male

Size	Art. No.
Ø 76 mm	080 0076
Ø 102 mm	080 0102
Ø 127 mm	080 0127
Ø 152 mm	080 0152



Hose Coupling, Male

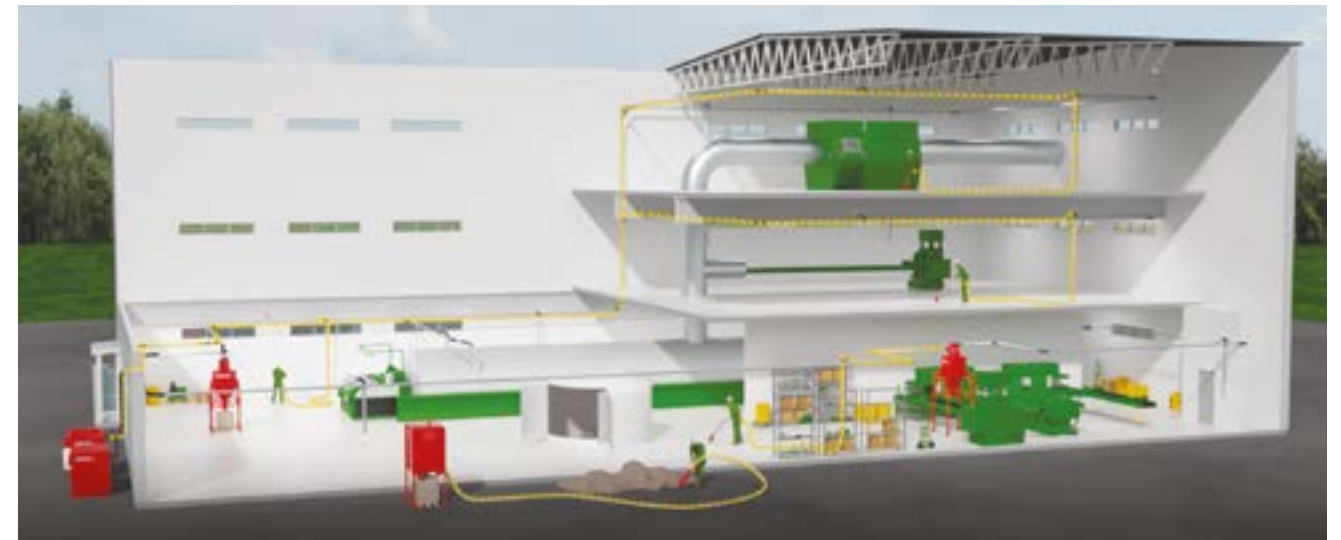
## Blind Cap

Size	Art. No.
Ø 127 mm	084 1200
Ø 152 mm	084 1500



Blind Cap

# PIPE SYSTEM





# PIPE SYSTEM



# PIPE SYSTEM

## Decal "Strong Vacuum"

Size	Art. No.
100 x 70 mm	781 0001



## Steel Pipe, Hot Dipped Galvanized

Hot-dipped galvanized. Thickness 2,9 mm  
Delivered in lengths of 6 m. For alternative dimensions contact us.

Size	Art. No.
Ø 76 mm	100 G076
Ø 108 mm	100 G108
Ø 127 mm	100 G127
Ø 152 mm	100 G152



Steel Pipe, galvanized

## Steel Pipe Sendzimir-zincified

Sendzimir-zincified. Thickness 2,0 mm.  
Delivered in lengths of 6 m. For alternative dimensions contact us.

Size	Art. No.
Ø 76 mm	100 2076
Ø 108 mm	100 2108
Ø 127 mm	100 2127
Ø 152 mm	100 2152



Steel Pipe, Sendzimir-zincified

## Pipe Bend Hose

Pipe Bend hose Black, textile reinforced hose in rubber with steelhelix, extra strong durable rubber inside, smooth outside surface. Thickness 9 mm.

Size	Art. No.
Ø 76 mm	012 0076
Ø 108 mm	012 0108
Ø 127 mm	012 0127
Ø 152 mm	012 0152



Pipe Bend Hose

# PIPE SYSTEM

## Branch Pipes

Branch pipes welded, hot-dipped galvanized.  
Thickness 2,9 mm. For alternative dimensions contact us.

Size	Art. No.
Ø 76-76 mm	105 0076
Ø 108-76 mm	105 0108
Ø 127-76 mm	105 0127
Ø 152-76 mm	105 0152
Ø 108-108 mm	105 4108
Ø 127-108 mm	105 4127
Ø 152-108 mm	105 4152
Ø 127-127 mm	105 6127
Ø 152-127 mm	105 6152
Ø 152-152 mm	105 8152

## Steel Bends, Long Radius

Galvanized. Thickness 2,9 mm.  
For other dimensions contact us.

Size	Art. No.
Ø 76 mm	130 0076
Ø 108 mm	130 0108
Ø 127 mm	130 0127
Ø 152 mm	130 0152

## Transitions

Welded, hot-dipped galvanized.  
For alternative dimensions contact us.

Size	Art. No.
Ø 108-76 mm	121 0108
Ø 127-76 mm	121 0127
Ø 127-108 mm	121 4127
Ø 152-108 mm	121 5152
Ø 152-127 mm	121 6152

## End Plug

Electro-zinked.

Size	Art. No.
Ø 76 mm	131 0076
Ø 108 mm	131 0108
Ø 127 mm	131 0127
Ø 152 mm	131 0152



Branch Pipe



Steel Bends, Long Radius



Transitions



End Plug

# PIPE SYSTEM

## L-formed Bracket Tella EF

Hot-dipped galvanized, horizontal.

Size	Art. No.
150 mm	150-0020
300 mm	150-0021
450 mm	150-0022
600 mm	150-0023
800 mm	150-0024

## L-formed Tella EF

Hot-dipped galvanized, vertical.

Size	Art. No.
300 mm	150-0061
600 mm	150-0062

## Bracket Walkway Tella EF

Left, Electro-zinked, gap 7 mm.

Size	Art. No.
200 mm	870-200541
400 mm	870-200543

## Ceiling Bracket Tella EF

Hot-dipped galvanized for 41 profile.

Art. No.
150-0087

## Angle Beam Clamp Tella EF 41

Hot-dipped galvanized, M10 grip 22.

Art. No.
150-0064

## Profile Tella EF

Hot-dipped galvanized, holes H41.

Size	Art. No.
2000 mm	150-0065

## Profile Tella EF

Electro-zinked, holes H62

Size	Art. No.
200 mm	150-0070



L-formed Tella EF



L-formed Tella EF



Bracket Walkway Tella EF



Ceiling Bracket Tella EF



Angle Beam Clamp  
Tella EF 41



Profile Tella EF



Profile Tella EF



# PIPE SYSTEM

## Pipe Mounting Clamp Tella EF

Size	Art. No.
Ø 76 mm	150-0071
Ø 108 mm	150-0072
Ø 127 mm	150-0073
Ø 152 mm	150-0074

## L-console

Size	Art. No.
150 mm	150 0150
200 mm	150 0200
250 mm	150 0250
300 mm	150 0300
400 mm	150 0400
600 mm	150 0600
800 mm	150 0800

## Z-console, Standard

Galvanized.

Size	Art. No.
H: 200 mm	151 0200

## Z-console, Extra Wide

Galvanized.

Size	Art. No.
B: 250 mm	151 0250

## Z-console, High Model

Galvanized

Size	Art. No.
H: 200 mm	151 1200

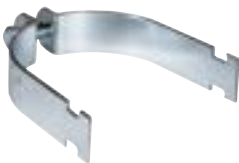
## Console profile

Standard galvanized, delivered in lengths of 2 m.

Size	Art. No.
2000 MM	152 2000

## Pipe Mounting Clamp M8

Size	Art. No.
Ø 76 mm	142 0076
Ø 108 mm	142 0108
Ø 127 mm	142 0127
Ø 152 mm	142 0152



Pipe Mounting  
Clamp Tella EF



L-console



Z-console, Standard



Z-console, Extra Wide



Z-console, High Model



Console Profile



Pipe Mounting Clamp M8

# PIPE SYSTEM

## Hose Clip, Single

Size	Art. No.
Ø 51 mm	145 0051
Ø 60 mm	145 0060
Ø 76 mm	145 0076
Ø 108 mm	145 0108
Ø 127 mm	145 0127
Ø 152 mm	145 0152



Hose Clip, Single

## Hose Clip, Heavy Duty

Size	Art. No.
Ø 60 mm	146 0060
Ø 76 mm	146 0076
Ø 102 mm	146 0102
Ø 108 mm	146 0108
Ø 127 mm	146 0127
Ø 152 mm	146 0152
Ø 203 mm	146 0203



Hose Clip, Heavy Duty

## Jet Coupling

With conductive rubber.

Size	Art. No.
Ø 76 mm	140 0076
Ø 108 mm	140 0108
Ø 127 mm	140 0127
Ø 152 mm	140 0152
Ø 203 mm	140 0203



Jet Coupling

## Tella Suction Outlet Blue 76

Self closing, blue.

Size	Art. No.
Ø 76 mm	162 0076



Tella Suction Outlet 76

## Tella Suction Outlet Blue 108

Self closing, blue.

Size	Art. No.
Ø 108 mm	162 0108



Tella Suction Outlet 108

# PIPE SYSTEM

## End Plate TELLA EF 41

Art. No.
780 0042



End Plate TELLA EF

## Nut with Spring TELLA EF 21

Size	Art. No.
M8	150 0005



Nut with Spring TELLA EF

## Beam Clamp TELLA EF 21

Size	Art. No.
M8	150 0063



Beam Clamp TELLA EF



# FILTERS

## Filter Cartridge Venting

For venting at different discharge options

Art. No.
601 4310



Filter Cartridge Venting

## Conical Safety Filter

Length 700 mm

Filtertype	Art. No.
Cellulose	601 4500 (CK-700)
Antistatic	601 45 ANTI (CK-700 ANTISTAT)
Polyester	601 42PY (PE-700)
Absolut	601 5200 (ACK-700)



Conical Safety Filter

## Cylindrical Safety Filter

Length 360 mm

Filtertype	Art. No.
Cellulosa	601 4000 (C-360)
Cellulosa öppen	601 40 OPEN
Antistat	601 40 ANTI (C-360 ANTISTAT)
Polyester	601 40PY (PE-360)
Absolut	601 5000 (A-360)



Cylindrical Safety Filter

## Cylindrical Safety Filter, others

Filtertype	Art. No.
Cellulosa	232460 (660-18)
Antistat	232460 ANTI (660-18 ANTISTAT)
Polypropylen	601 4400 (700-8-PP)
Absolut	601 5100 (A-700)



Cylindrical Safety Filter, others

## Filter Hose with Rubber Collar, Polypropylene

Filtertype	Art. No.
95 x 800 mm	230100
95 x 1500 mm	230200



Filter Hose with Rubber Collar, Polypropylene



# FILTERS

## Filter Hose with Rubber Collar, Polyester

Filtertype	Art. No.
95 x 800 mm	230300
95 x 1500 mm	230350



Filter Hose Rubber Collar,  
polyester

## Filter Hose with Steel Ring, Polypropylene

Filtertype	Art. No.
117 x 800 mm	230150



Filter Hose Steel Ring,  
polypropylene

## Filter Hose with Snap-in Closing, Coated Polyester

Filtertype	Art. No.
130 x 800 mm	601 08TF
130 x 1200 mm	601 12TF



Filter Hose,  
coated polyester

## Filter Hose with Snap-in Closing, Antistatic

Filtertype	Art. No.
130 x 800 mm	601 08ANTI
130 x 1200 mm	601 12ANTI



Filter Hose,  
antistatic

## Support Basket

Filtertype	Art. No.
130 x 800 mm	601 2100
130 x 1200 mm	601 2200
95 x 800 mm	230500
95 x 1500 mm	230650



Support Basket for  
Filter Hoses

# FILTERS

## Bag Filter Standard

Filtertype	Art. No.
1000 mm	601 0200



Bag Filter Standard  
in polyester needle felt.

## Bag Filter Coated

Filtertype	Art. No.
1000 mm	601 1100
1200 mm	601 1400
1500 mm	601 1200



Bag Filter in  
Coated Polyester Fibre

## Bag Filter Coated, Antistatic PFTE

Filtertype	Art. No.
1000 mm	601 1302
1200 mm	601 1401
1500 mm	601 1305



Bag Filter in Coated  
Polyester/Carbon Fibre Antistatic

## Support Basket without Handles

Filtertype	Art. No.
1000 mm	601 3100
1200 mm	601 3500
1500 mm	601 3300



Support Basket without  
Handle with Jet-pulse Cleaning

## Support Basket with Handles

Filtertype	Art. No.
1000 mm	601 3000
1200 mm	601 3400
1500 mm	601 3200



Support Basket with Handles

# SPARE PARTS

## Vacuum Indicator TELLA

Art. No.
701 1200



Vacuum Indicator TELLA

## Pressure Difference Switch Type Delta

Art. No.
701 3316



Pressure Difference Switch

## Solenoid Valve for ATM

Performance	Art. No.
230 V AC	701 3600
24 V DC	701 3700



Solenoid Valve for ATM

## Thermo Coupling

Klixon, will disengage by 120°C or 130°C

Performance	Art. No.
120 °C	701 3400
130 °C	701 3130



Thermo Coupling

## Support Helix for Thermo Coupling

Art. No.
172 310814



Support Helix

## Level Guard

\*Paddle guard and extension not included.  
Contact us for more information and the correct length.

Performance	Art. No.
220 - 240 V AC	070 2020
240 V AC ATEX	070 2020 ATEX
110 V AC	070 2021
12/24 V DC	070 2030



Level Guard

# SPARE PARTS

## Delay Time Interval Control

Adjustable working time from 0 to 10 hours.

Performance	Art. No.
24-240 V AC/DC	710-0001



Delay Time Interval Control

## Timer for ATM-Filter Cleaning

Adjustable cleaning interval and cleaning time.

Performance	Art. No.
12-240 V AC/DC	710-0062



Timer for ATM-Filter Cleaning





# SPARE PARTS

## Vacuum Valve 76 mm / 108 mm

Size	Art. No.
76 mm	701 0600



Vacuum Valve 76/108

## Vacuum Valve 152 mm

Size	Art. No.
152 mm	701 0500



Vacuum Valve 152 mm

## Complete ATM Valve

Art. No.
604 1000



Complete ATM Valve  
Filter Cleaning

## Rubber Membrane for ATM Valve

Art. No.
604 1200



Rubber Membrane  
ATM Valve

## Sponge Rubber Sealing

Size	Art. No.
80 x 30 mm	245510

## Cell Rubber Stripe

Size	Art. No.
15 x 8 mm	601 6008
25 x 20 mm	601 6100
40 x 25 mm	601 6200
50 x 30 mm	601 6300
25 x 15 mm	601 6400



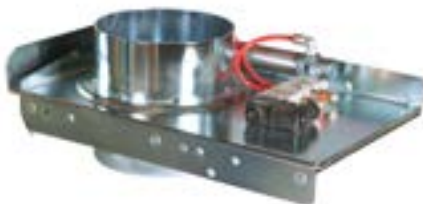
Cell Rubber Stripe

# SPARE PARTS

## Sliding Valve

Pneumatic sliding valve featuring either straight or pull-ring edges, also available with manual operation.

Size
Sizes from 50 mm up to 203 mm.



Sliding Valve

## Butterfly Valve

Delivered complete with actuator and solenoid valve. Other options on request.

Size	Art. No.
Ø 150 mm	702 1300
Ø 200 mm	702 1200
Ø 250 mm	702 1100
Ø 300 mm	702 1000



Butterfly Valve

## Flap Valve

We provide various versions of flap valves designed for discharging into Big Bags or skips.

Size	Art. No.
DN 250	560 0003
DN 300	560 0005



Flap Valve

*If you require any additional spare parts or have specific needs, please do not hesitate to contact us.*

# SERVICE

## DISAB Service Agreement: Simplify Your Maintenance Management

Control your maintenance costs effectively with DISAB. Our service agreements offer both scheduled maintenance and emergency repairs to ensure continuous operational efficiency.

### Customizable Solutions:

Collaborate with us to tailor a service plan that fits your business’s needs and budget. Choose from basic inspection services to comprehensive packages, including training and extended services.

### Comprehensive Care:

We provide expert service and original parts for DISAB, TELLA, and VIBRAMAT, and maintain other brands for smooth equipment operation.

### Preventive Maintenance for Reliability:

Our proactive approach helps prevent operational disruptions and downtime by replacing worn or outdated components before they fail.

### Efficient and Effective:

With detailed documentation of your facilities, we ensure rapid response and efficient problem resolution, enhancing both safety and reliability.

### Choose DISAB:

Discover the DISAB difference and enjoy optimal maintenance that safeguards your operations.



# SERVICE

Features	D-Test	DISAB Basic Service	DISAB Extended Service
Purpose	Equipment Check-up	Regular Maintenance	Comprehensive Maintenance
Service Interval	As needed	1-2 times per year	Customized intervals
Oil Change		✓	✓
Vacuum Pump Service		✓	✓
Engine Service		✓	✓
Safety Filter	✓	Checked & Changed	Checked & Changed
Main Filter Replacement	✓	✓	✓
Seals and Gaskets Check	✓	✓	✓
Vacuum Safety Valves	Checked	Checked & Adjusted	Checked & Adjusted
Functional Check	✓	✓	✓
Electric Motor Consumption Check	✓	✓	✓
Vibration Control	✓	✓	✓
Vacuum Check	✓	Checked & Adjusted	Checked & Adjusted
Control of pipe system			✓
Calling-out-time			✓
Advanced Controls			✓ (Pipe systems & separators)
Status Report	✓	✓	✓





Place your order by contacting us at:  
+46 (0)8 514 505 70 or by email at  
[industrial@disab.com](mailto:industrial@disab.com).

For more information, please visit our  
website at [www.disab.com](http://www.disab.com)