



*The vacuum unit is
equipped with options.*

DISAB Centurion™ LN10RR

Usage

DISAB Centurion™ LN10RR is a high suction capacity vacuum unit, which is mounted on a roll on / roll off hook lift and can therefore operate independently, depending on whether it is positioned on a truck chassis or standing on the ground. Its round tank makes it suitable for handling both wet and dry applications. It is commonly used for industries such as cement, lime, chemicals, plastic, foundries, steelworks, quarries, pulp & paper, shipyards, and energy.

Characteristics

DISAB Centurion™ LN10RR is powered by a separate diesel engine and is equipped with a suction only feature. It possess great flexibility for different applications with multiple options available and handles all material that can pass through an 8" suction hose.

DISAB Centurion™ LN10RR consists of a machine housing and a material tank. The tank volume is 7 m³ and discharge of materials occur hydraulically by the whole unit tipping using the truck hook lift function, with the emptying hatch open. The tailgate is hydraulically operated and locked.

Benefits

The DISAB Centurion™ LN10RR offers extremely good suction capacity. The vacuum pump is powered by a separate diesel engine which gives quiet operation, as well as allowing operation using tax-free diesel.

Other benefits include:

- The possibility to use the unit's function with no power transfer from the truck's engine.
- With our effective, self-cleaning filter system, the outside air is completely cleaned at the same time as ensuring good fuel economy.
- Sold with extensive DISAB Academy training included to optimize safety and economical value.
- Multiple options available, tailored to your specific needs.
- Operated using a hand held radio for an optimized ergonomic experience for the operator.
- The suction hose can either be connected via the hose boom (option) or via a rear inlet on the emptying hatch.
- Filter cleaning occurs with bursts of atmospheric air let in via the relief valve. Cleaning occurs each time the unit is unloaded.

Technical Data Chart for DISAB Centurion™ LN10RR

Description

| | |
|-------------------------|---|
| Vacuum pump | Three-Lobe Roots Pump |
| Max overpressure, mbar | N/A |
| Operating speed (rpm) | 2,650 |
| Voltage Frequency, V/Hz | N/A |
| Engine type | Stage III / Stage V |
| Tank volume (m³)* | 7 |
| Tank tipping system | Tailgate is hydraulically operated and locked.. |
| Cooling air filter | Cartridge filter |
| ATEX approved | N/A |

* Excluding filter volume

| | |
|----------------------------|---|
| Max vacuum, mbar | 950 |
| Air volume m³/h (unloaded) | 8,100 |
| Power, kW | 220 |
| Power source | Diesel |
| Tank material | Carbon steel / stainless steel |
| Total tank volume (m³) | 9.7 |
| Main filter system (m²) | 770 galvanized / stainless steel cages with filter socks in needled polyester glazed surface. Filter area is 26 m². |
| Safety filter surface (m²) | 33 |

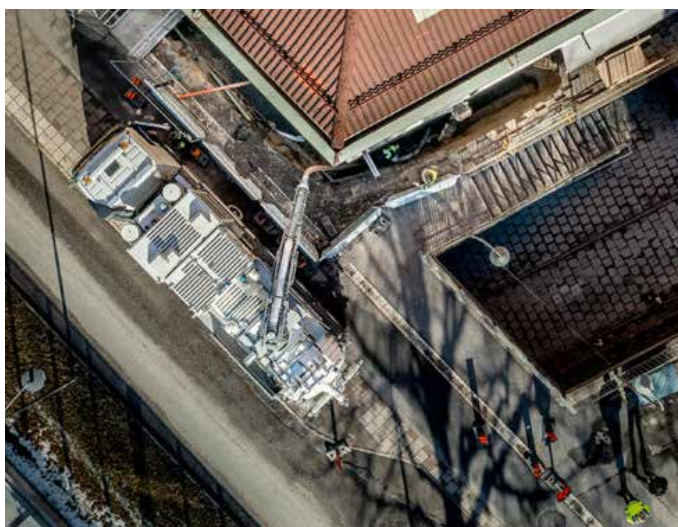
Core function

| | |
|-----------------|------------------------------|
| Suction | Yes |
| Blow / eject | N/A |
| Transport (ADR) | N/A |
| Discharge | By tipping the complete unit |
| Dry materials | Yes |
| Wet materials | Yes |

Weight and Dimensions**

| | |
|----------------------------|--------|
| Complete unit (kg) | 13,500 |
| Total unit length (mm) | 7,200 |
| Total width (mm) | 2,500 |
| Height with hose boom (mm) | 2,700 |

** Weight and dimensions are approximate and dependant of vacuum unit equipment.



The vacuum unit consists mainly of a machine house and a container. The stable design and weight mean that the vacuum extractor must be handled by a four-axle hooklift truck.

DISAB Centurion™ LN10RR is mounted to a roll on / roll off frame with a hook lift. It offers a high suction capacity and can handle both wet and dry materials.